

---

# WHITCHURCH HOSPITAL

## Fabric 1: Site plans, photographs and survey

Clarence (Yunfan Zhang)

---



—— *This report contains the historic and current maps around Whitchurch Hospital with analysis of traffic and distribution of facilities and amenities, and some drawings of Whitchurch Hospital.*

---



HISTORIC MAPS — Based on the Map in 1900s

Why the hospital located in there?

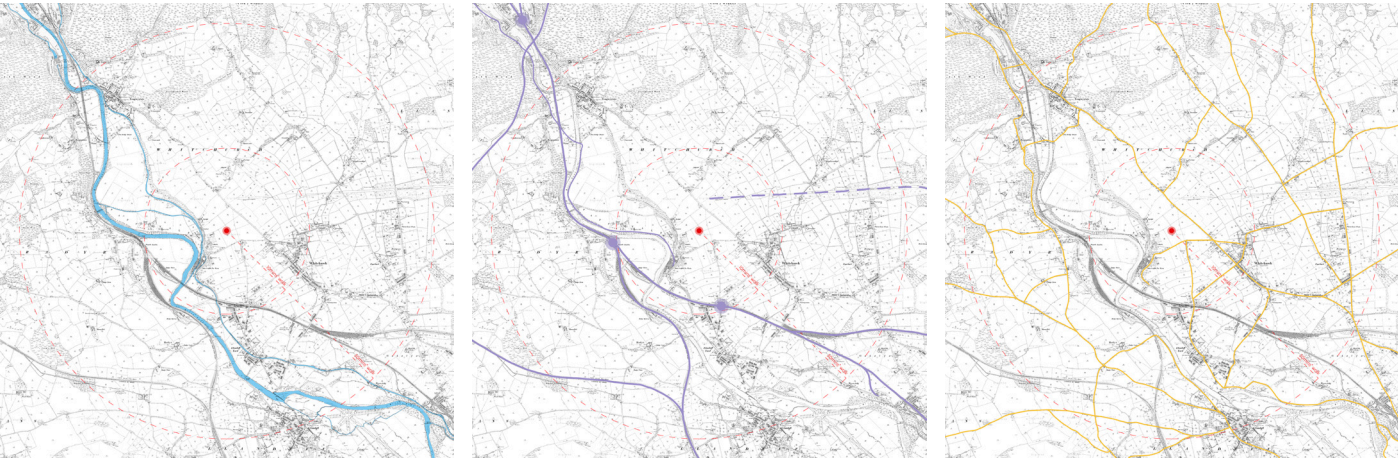


There is a map in 1900s, when the Whitchurch Hospital was about to be built (the hospital was finished construction in 1908). The location of the red dot on the map is the location of the Whitchurch Hospital, and the broken red line shows the approximate range of 10 minutes and 30 minutes' walk respectively.

Why is Whitchurch Hospital located here? It may caused by the service scope of the hospotal. As it shows in the northwest corner of the map that there is a forest area outside the range of 30 minutes' walk, so the service scope of Whitchurch Hospital should just cover the town area, neither to the Cardiff city nor to the suburbs.

About the reasons of the location of Whitchurch Hospital, the following content will be analyzed from the perspectives of traffic and the distribution of facilities and amenities.

TRAFFIC

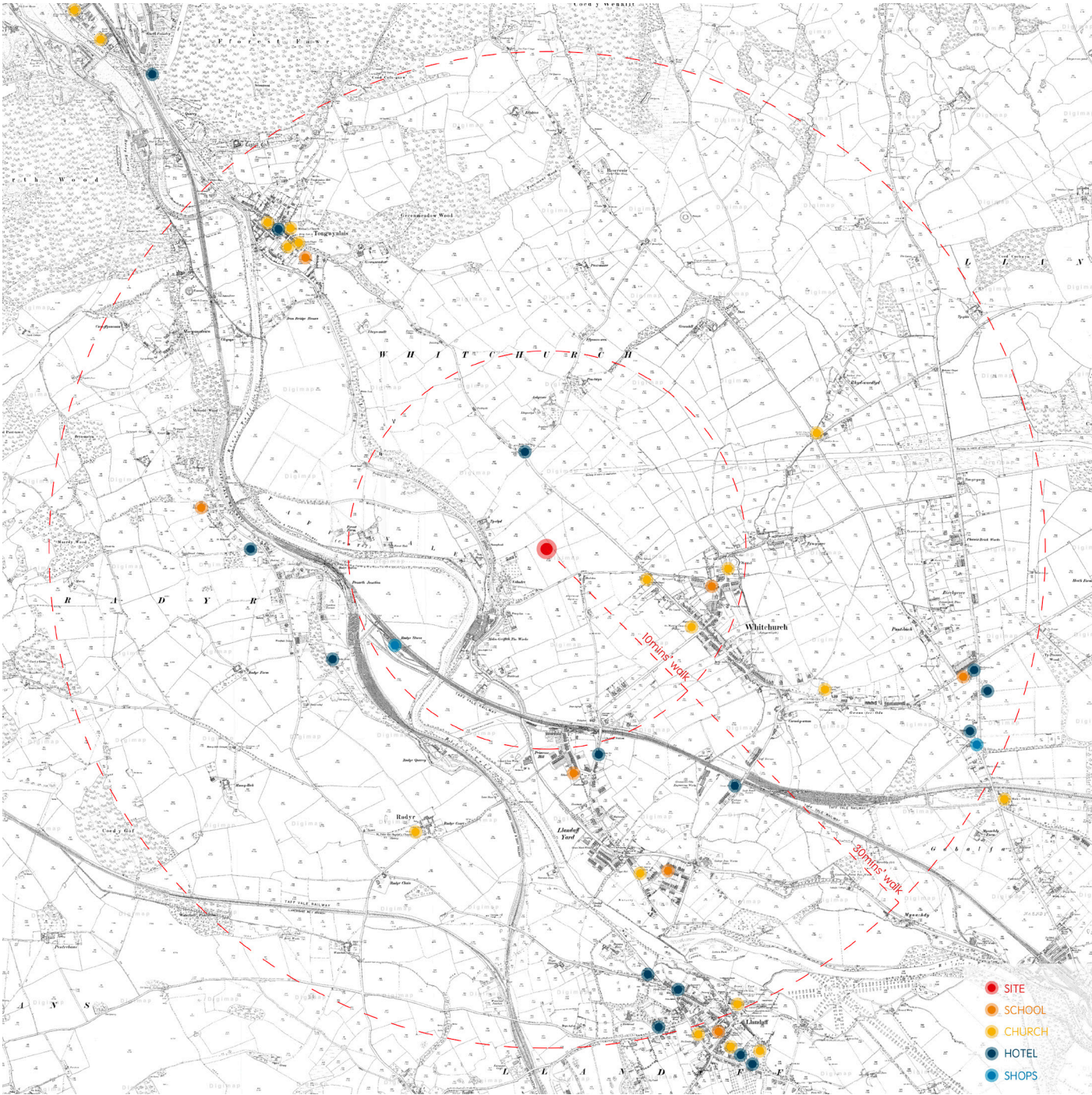


The first figure shows the river around the site of Whitchurch Hospital, which are known as River Taff and Glamorganshire Canal. The trend of the two rivers is roughly the same, and the site is very close to one of the junctions of these two rivers. The Glamorganshire Canal was thought up as a solution to the issue of transporting the goods at that time, so the Whitchurch Hospital may be located here to facilitate the transportation of hospital resources.

The second figure shows the railway layout around the site of Whitchurch Hospital, as another main way of freight transportation, the trend of railway is very similar to the river. At the same time, the railway also plays the role of transporting people. Three railway stations can be seen in the picture shown as the purple points, two of which can be arrived in about 10 minutes by walk from the Whitchurch Hospital, so it can be said very convinient if the patients and their families want to go to the hospital by train. It also should be noted that a new railway is under construction in the northeast of the site, and the railway and the hospital are put into use alomst at the same time, by this railway, peoples can get to the hospital within five minutes after get off the train.

The third figure shows the main roads around the site of Whitchurch Hospital. From the information in the figure, there are not many roads around the site that can cross the river, so it is more convenient to get to the hospital on the East Bank of the River Taff than on its West Bank. And the road in the southeast is obviously denser, which should be the reason for being closer to Cardiff city.

DISTRIBUTION OF FACILITIES AND AMENITIES



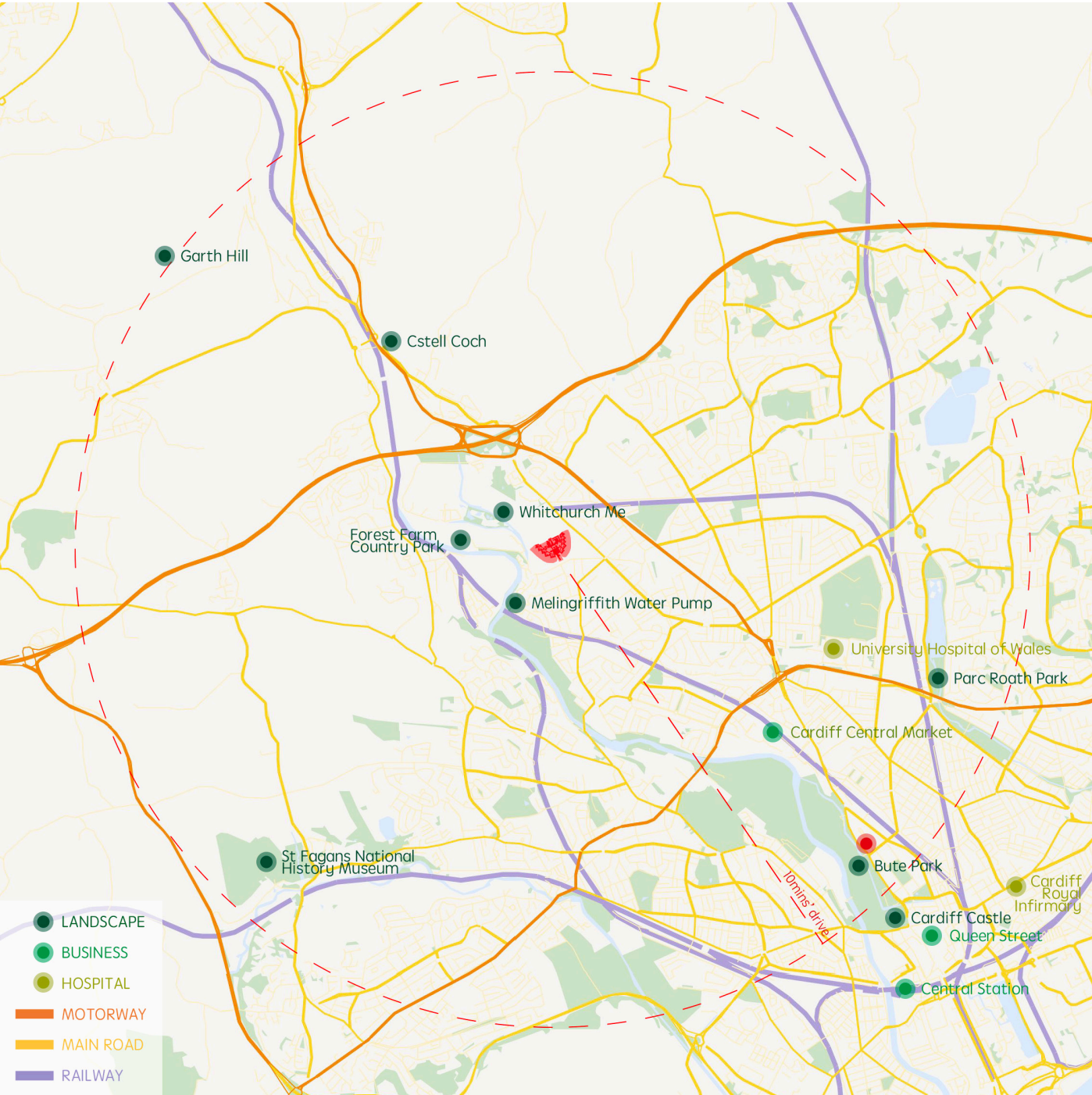
Due to the mapping, there are more churches recorded and less other facilities and amenities. According to the location of the school and church, the location of several villages can be roughly determined, the infrastructure is mostly distributed according to the village location. The nearest village to Whitchurch Hispotal is Whitchurch, but there is no record of amenities in the village. Except for the hotel directly above the site, the amenities like hotels and shops recorded on the map are all far away from the hospital.

It can also be seen that infrastructure is basically distributed along rivers and railways, which also proves the importance of transportation at that time. The hospital covers a large area, so it will not be built directly in the village. In the synthesis the factor, the site is indeed a suitable choice to meet the requirements of convenient transportation, wide coverage and sufficient construction space.



**CURRENT SITUATION — Based on the Contemporary Map**

What functions can the hospital be transformed into?



The center of the figure is Whitchurch Hospital, and the broken red line shows the approximate range of 10 minutes' drive. The approximate range of human activities can be determined by the distribution of motorway and main roads. It can be found that Whitchurch Hospital is on the edge of human activities areas, and the existing service scope of other hospitals is enough to cover the main areas, so there is no need to continue its medical related functions.

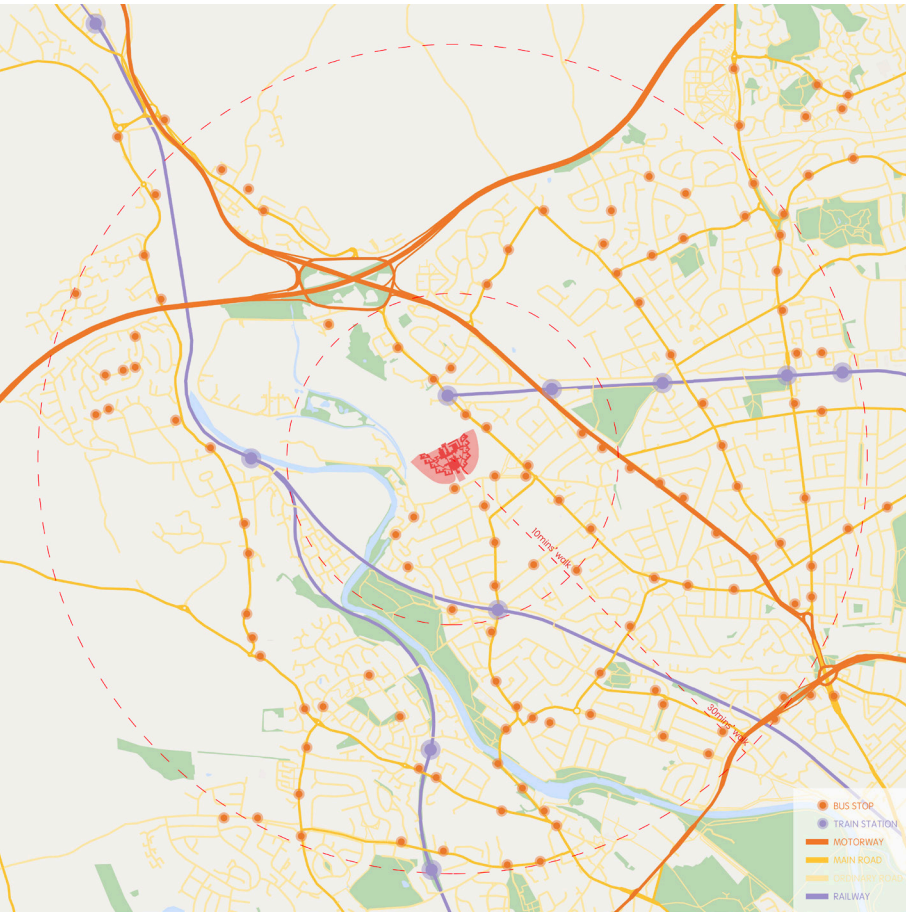
The red dot in the lower right corner of the figure is the No.2 North Road, around it are some scenic spots in Cardiff downtown area, no hard to see that they are all located about ten minutes' drive away from Whitchurch Hospital. Besides, there are also many landscapes like Whitchurch Me Nature Reserves and Forest Farm Country Park around the hospital, and there are some landscapes like Cstell Coch and Garth Hill further away, they all basically run along the River Taff and the railways. If they are regarded as a tourism cultural route, it might be a good choice to renovation the hospital as an auxiliary function of the tourism.

Is this assumption appropriate? If not, what would be better for this renovation? To find the answer, the following content will be still analyzed from the perspectives of traffic and the distribution of facilities and amenities in the contemporary status, trying to provide a direction for the future renovation.

**TRAFFIC**

The public transportation around Whitchurch Hospital is very convenient. A flyover is about one kilometer north of the hospital, which is very easy for people who choose the motorway transportation mode to get here. The train station is almost in front of the main entrance of the hospital, and very developed bus stops can let tourist to everywhere they want to go to by bus. To sum up, no matter what form of transportation the tourists choose, it is convenient to get to the hospital place.

According to its traffic conditions, the hospital is very suitable to be transformed into a travel transfer station, through which it can connect various scenic spots around and provide various convenient services for tourists.



**COMPARISON OF HISTORIC AND CURRENT TRAFFIC**

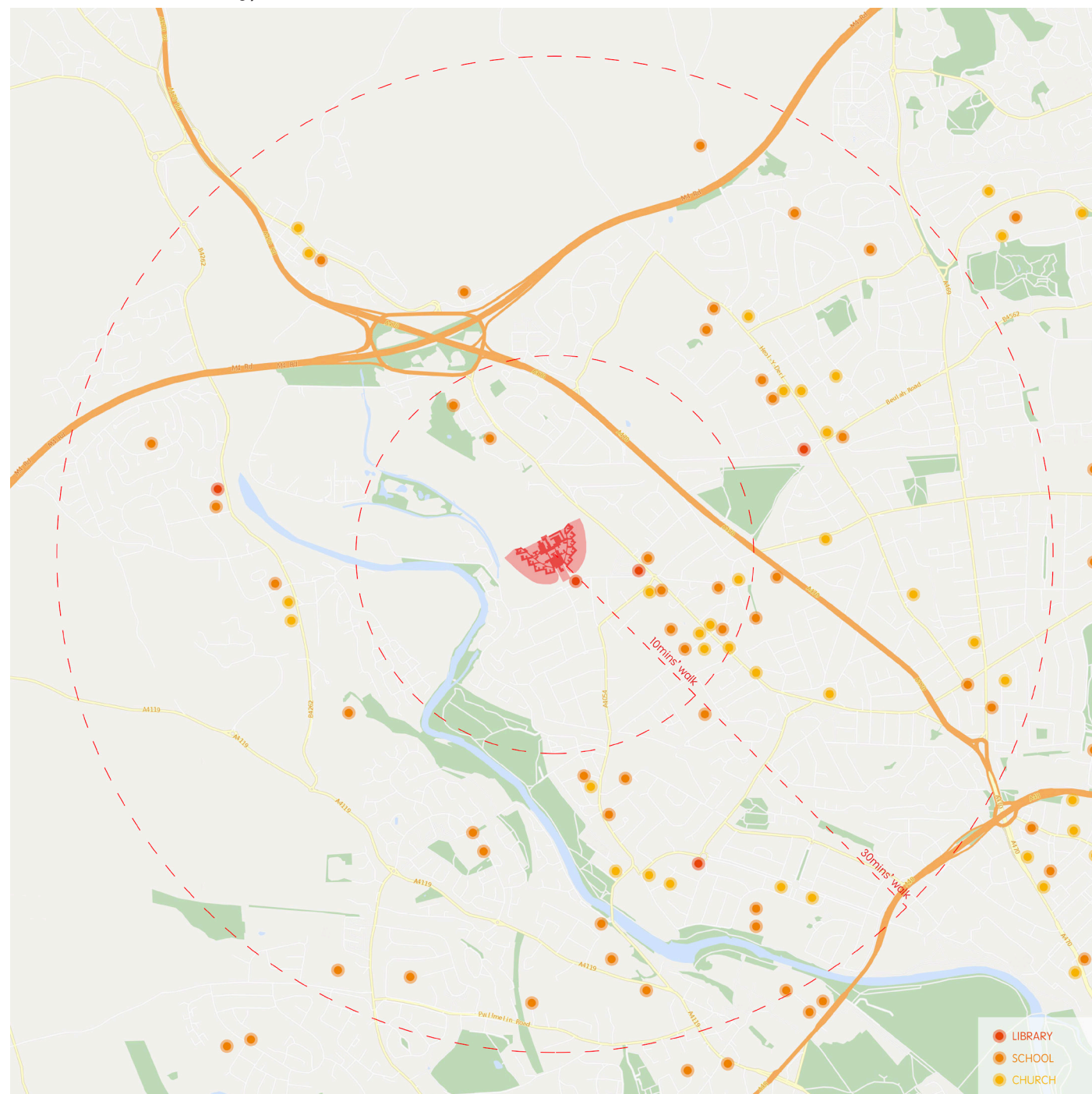
By comparing maps from the 1900s to the present, it can be found that the flow of the River Taff is not as great as before, and the Glamorganshire Canal is almost dry because it has not been used for a long time (the Cardiff Corporation declared it closed in 1940s). The closure of the canal affected transport dependent businesses such as the coal business, and made economic development no longer dependent on the river, breaking the previous model of development along the River Taff, the Whitchurch Hospital's economy is also affected.

The texture of main roads and railways around Whitchurch Hospital has not changed much, but there are more connections on both sides of River Taff. In addition, because of the emergence of the motorway, the traffic must be much more convenient than before.





**1. Distribution of library, school and church**

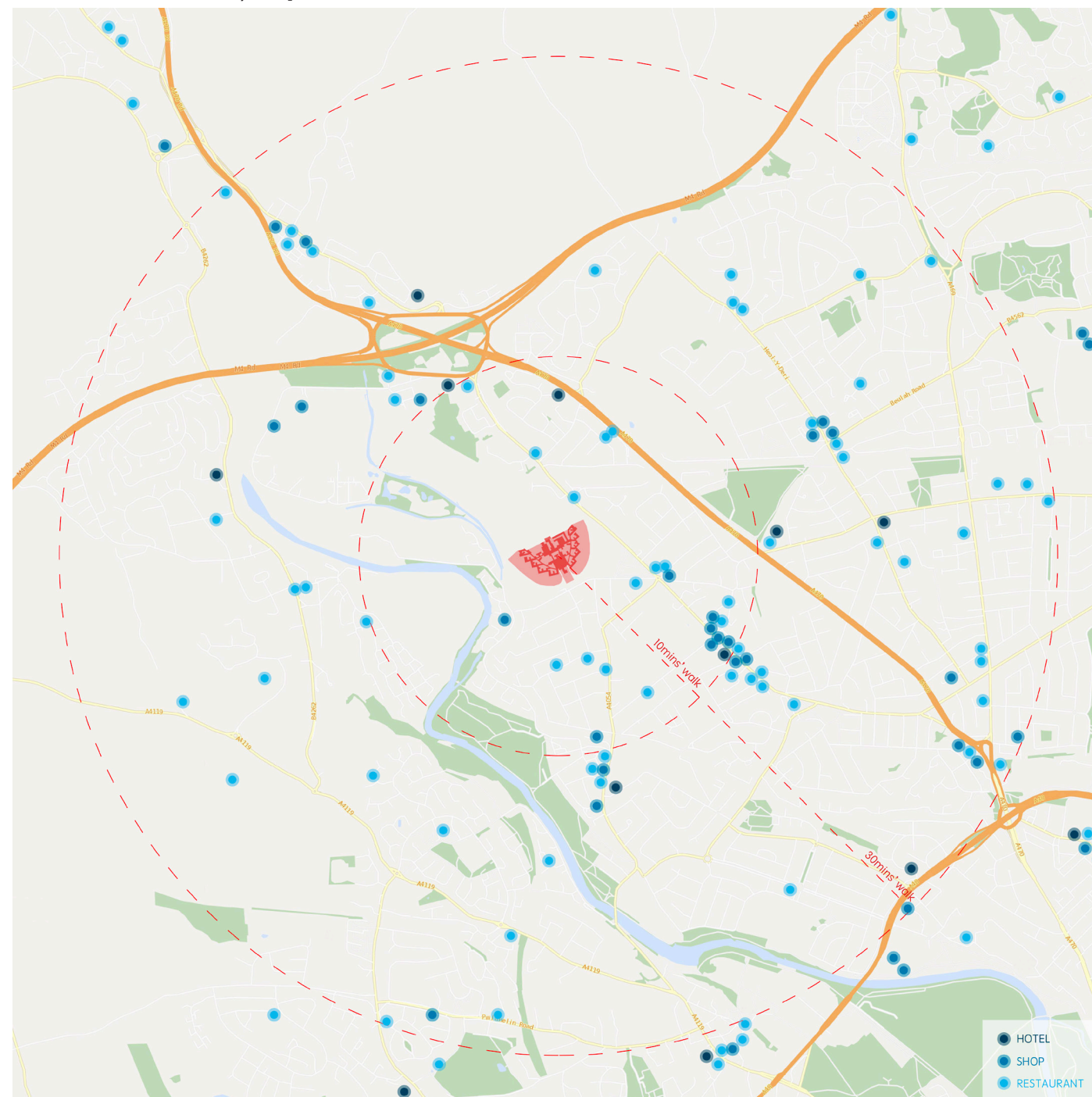


Library, school and church represent the degree of education and culture. Putting these three elements on a map, which aims to analyze the distribution of education and culture around Whitchurch Hospital. The figure shows that the most densely distributed points is near the hospital, where is the location of Whitchurch, and there are already two libraries around the hospital.

The facilities and amenities in these functions basically distributed as the village location, it is easy to understand, after all, building a school in the suburbs is difficult to operate. Therefore, it is not appropriate and not necessary to renovate the suburban hospital into school or library,

From another point of view, if it is renovated into a tourism related functional building, whether from its distance from the town or its functional orientation, it is very suitable to be a school visit project, to show to the students about its history and the informations of the scenic spots around it.

**2. Distribution of hotel, shop and restaurant**

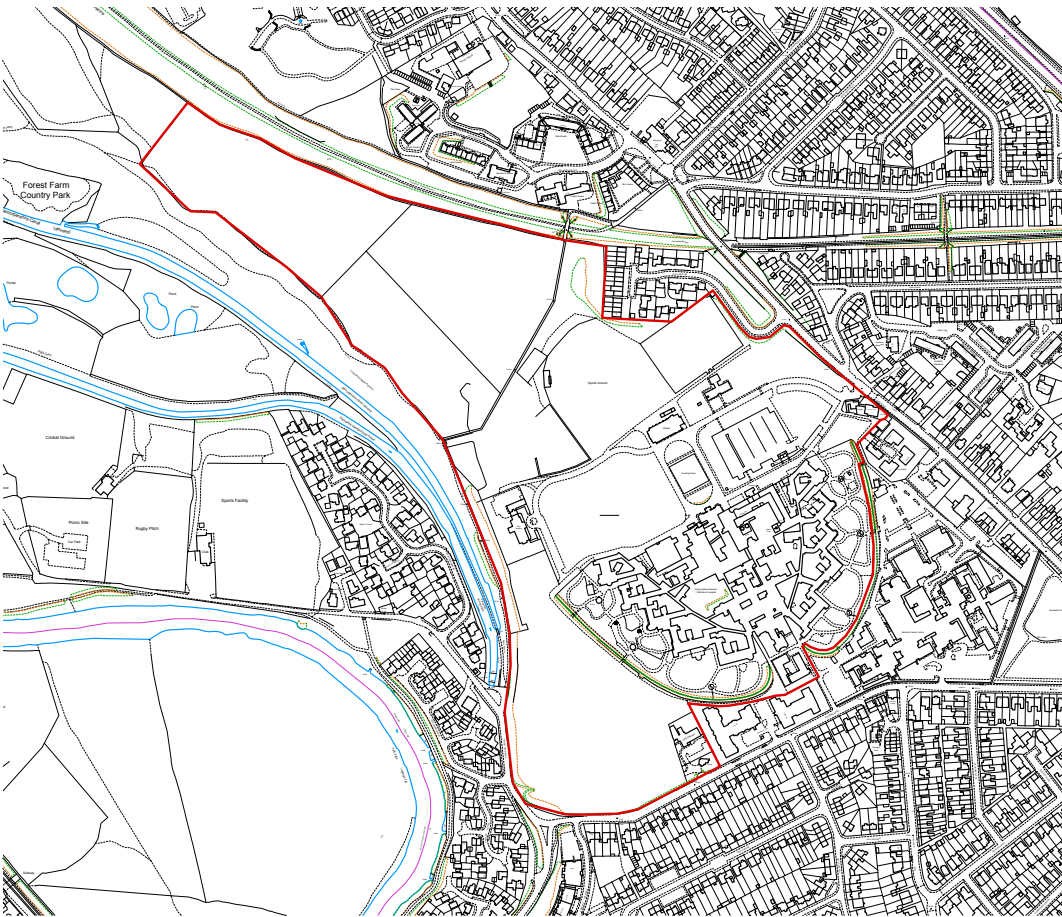


It can be seen from the figure that the distribution of facilities and amenities are no longer distributed along the river as before, but is more inclined to be distributed along the motorways and main roads. There are many restaurants around Whitchurch Hospital, and there are two relatively busy roads in the south and southeast of the hospital, which gathering a lot of shops and restaurants. Hotels are relatively less distributed around the hospital, if the renovation aims to give service for tourism, I think hotel is an essential function.

In conclusion, the renovation of Whitchurch Hospital is positioned as a comprehensive building serving the tourism, in which the function of the hotel is essential, so as to provide enough rest for tourists at the transfer station. Because there are many restaurants and shops around, it is not necessary to set up too many catering services, simple cofe and souvenir selling shops are enough. In addition, it is better to set a museum which shows the history of Whitchurch Hospital, and as a travel transfer station, the introduction of surrounding scenic spots and guide service should also be included in its functions.

**DRAWINGS OF WHITCHURCH HOSPITAL**

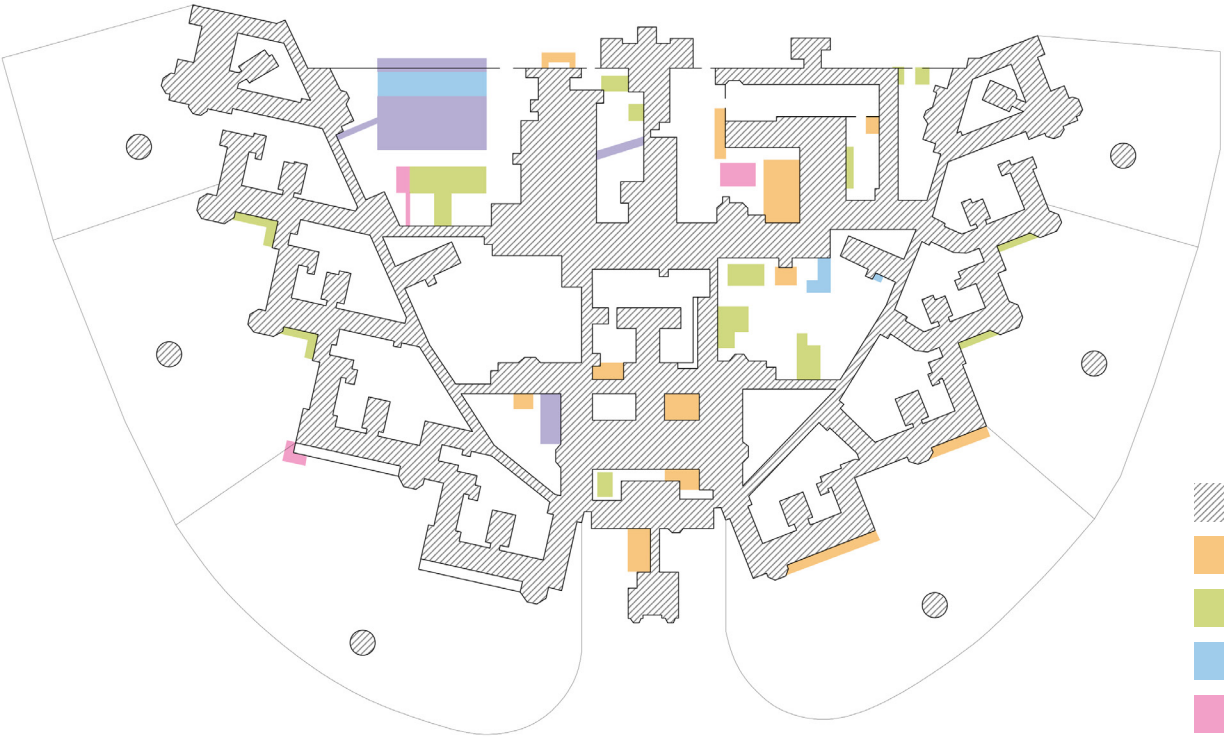
**PROPERTY LINE**



◀ The red line in the picture is the property line of Whitchurch Hospital, which covered not only the hospital but also its ancillary buildings and the Whitchurch Meadow Park in the northwest corner.

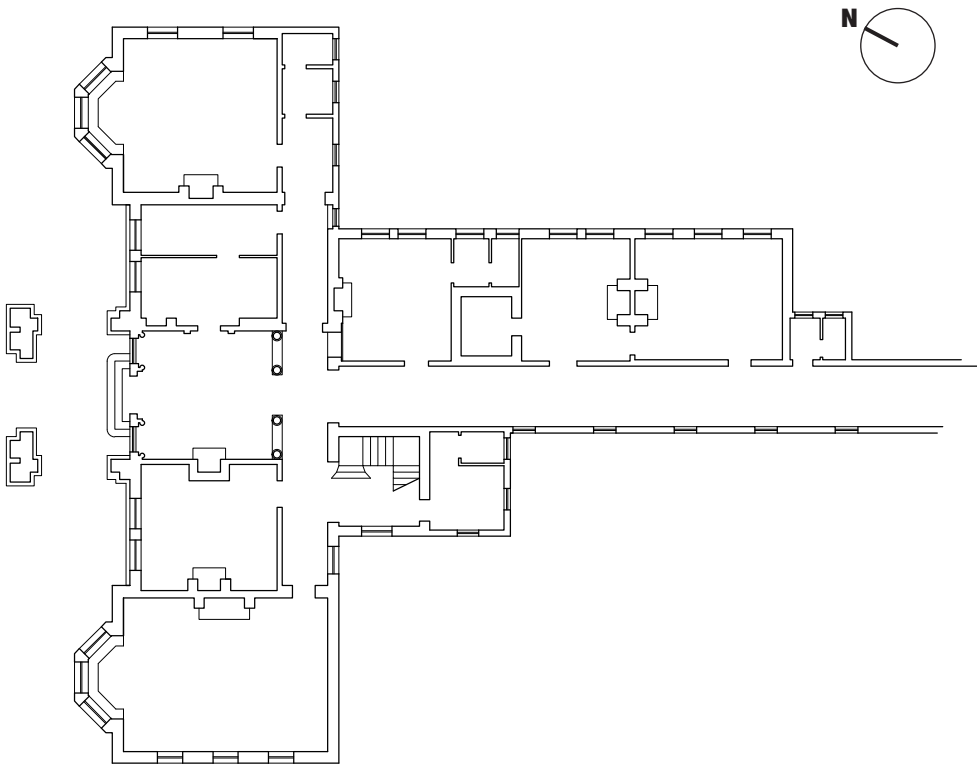
▼ Whitchurch Hospital built in the 1900s and added constantly. It is shown in the figure that most parts of the building are original, and it was changing in detail constantly in the decades that followed.

**PERIODS OF CONSTRUCTION**

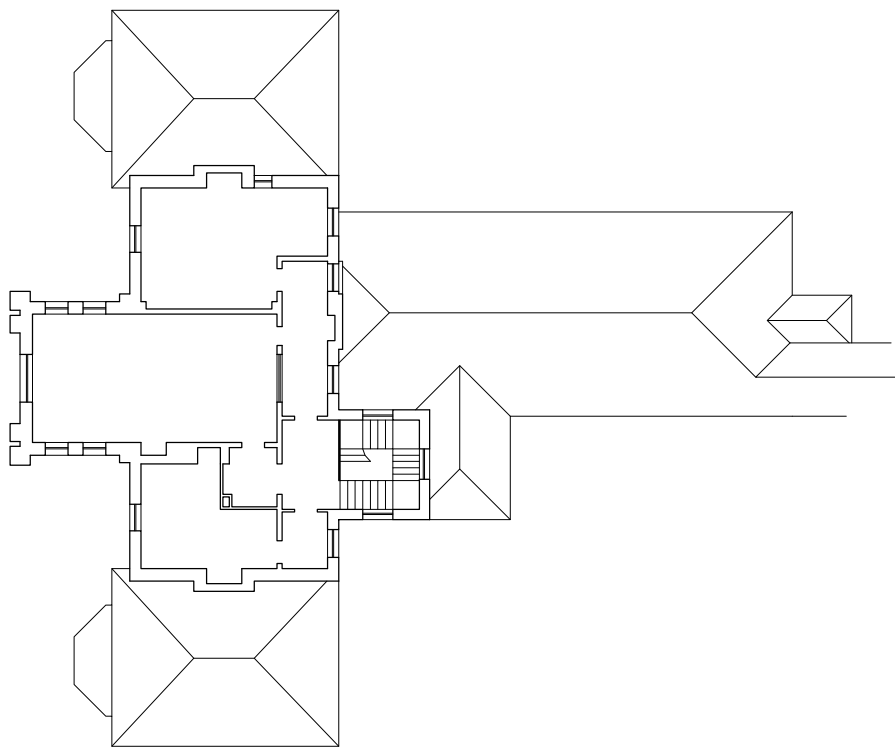


- Original
- 1920s
- 1940s
- 1950s
- 1960s
- Lately

**MAIN ENTRANCE AND OFFICIAL BLOCK 1: 300**



**Ground Floor Plan**



**First Floor Plan**

